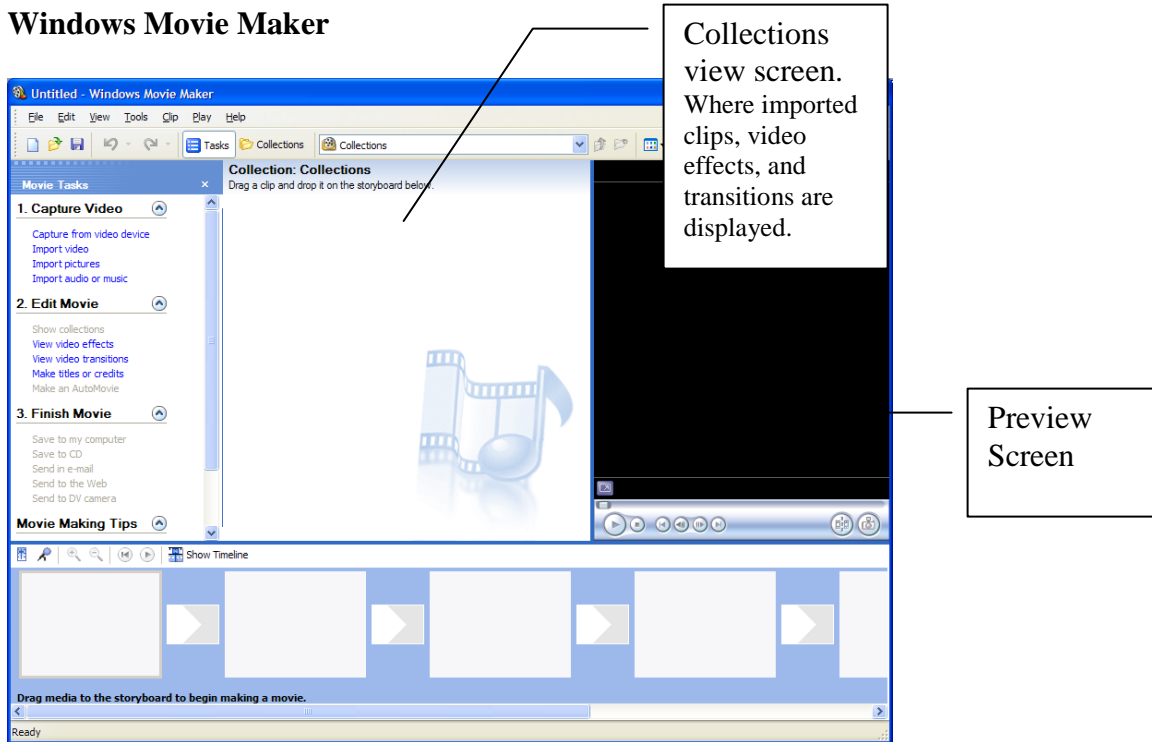


USING WINDOWS MOVIE MAKER

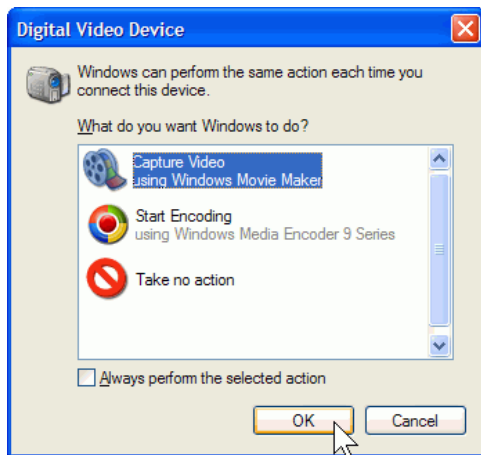
Windows Movie Maker



Windows Movie Maker is used for editing together video footage. Similar to Macintosh's iMovie program this allows for the editing of individual clips of video to be rearranged and composed into a new movie, with the addition of effects such as audio track overlays, text, and scene transitions. Unlike iMovie however, Windows Movie Maker can create effects over actual footage, giving video clips different visual qualities.

Import Footage

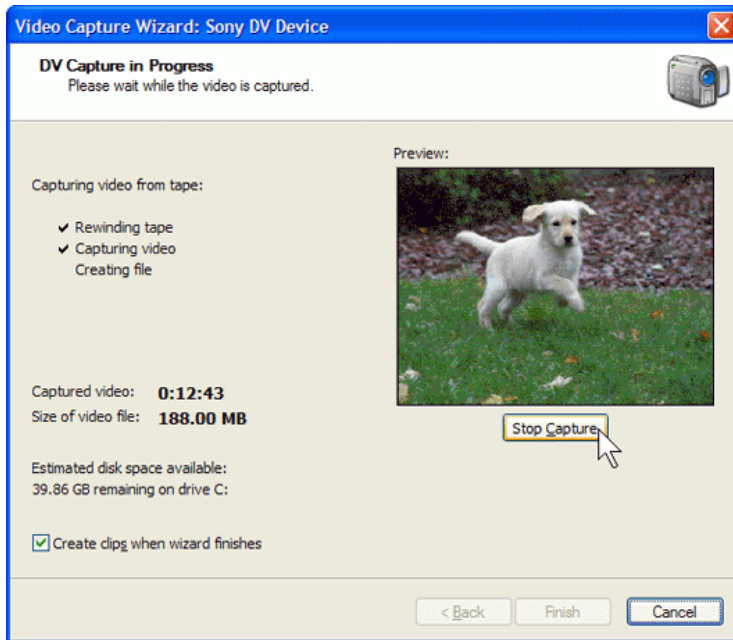
You can import footage using a USB/1394 cable, 1394/1394 cable or a firewire/i.Link connection.



1. Please see our documentation on connecting the camera to the computer which is located at <http://library.cnu.edu/media/docs.htm>.

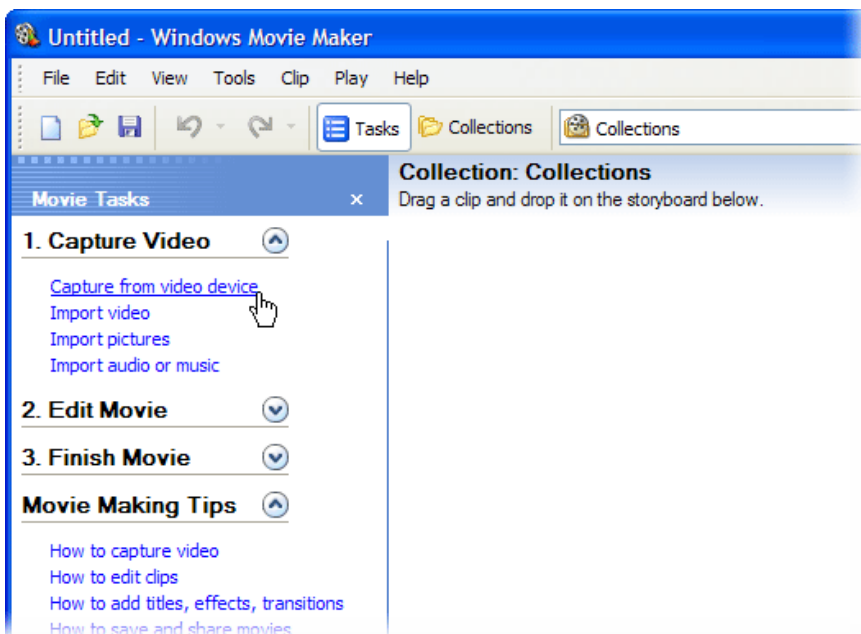
2. Turn your camera on, and set it to playback mode. The Connection Wizard will start automatically, hen prompted, click Capture Video using Windows Movie Maker. Then click OK.

3. Microsoft Windows Movie Maker starts the Video Capture Wizard. On the Capture Video File page, type a name for your video. Then click Next.
4. On the Video Setting page, accept the default settings by clicking Next.
5. On the Capture Method page, click Next. It's easiest to capture the entire tape at once; if sections remain that you don't need, you can delete them later.



6. The Video Capture Wizard rewinds your tape and then begins capturing it. While the tape is being captured, you'll see it playing in the Preview window and you'll be able to hear the audio through your speakers.
7. After the tape is captured (this usually takes about an hour), the wizard will stop automatically. Windows Movie Maker will always scan the entire tape, even if your recording is brief. If you reach the end of your recording before it reaches the end of your tape, click the Stop Capture button, and then click Yes.

If the Connection Wizard does not automatically appear you can manually capture video.



1. Start Movie Maker by clicking **Start> All Programs> Windows Movie Maker**.

2. In the Movie Tasks pane, under Capture Video, click **Capture from video device**.

3. Movie Maker starts the Video Capture Wizard. On the Video Capture Device page, click your camera. Then click Next.

4. On the Capture Video File page, type a name for your video. Then click Next. On the Video Setting page, accept the default settings by clicking Next

5. On the Capture Video page, use your video camera to rewind or fast-forward to about five seconds before the start of the clip that you want to download. Then press the play button on your video camera, and immediately click the **Start Capture** button in the Video Capture Wizard. It's okay if you start capturing too early, because you can trim the beginning of the clip later.

6. Click **Stop Capture** at the end of your clip. It's also okay to capture the entire tape at once, because you can break it into shorter clips later.

Repeat steps 7 and 8 to capture other clips. When you're done, click **Finish**

Movie Maker automatically breaks your movie into clips and adds the clips to a video collection with the name you provided.

Creating the Video

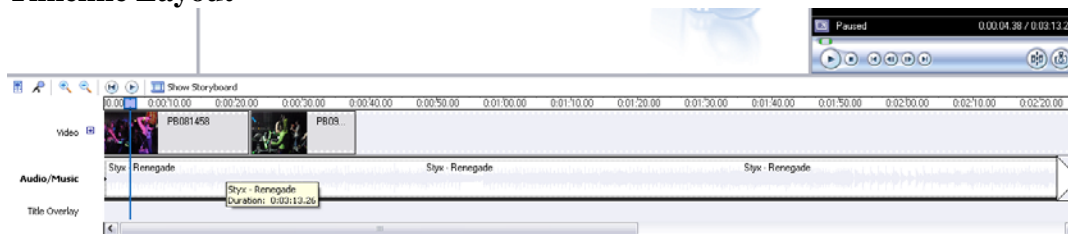
Once you import footage to Windows Movie Maker there are 3 work panes available. The **contents** pane holds all the clips you have imported and displays the video editing options when selected. The **storyboard** shows your video and allows you to edit finishing touches such as transitions or video effects. The **timeline** replaces the storyboard when selected and allows for the editing of actual clips through trimming, combining or splitting.

The storyboard and timeline serve the same function but display the video information in different formats. The storyboard shows the sequence of clips while the timeline displays the timing.

Storyboard Layout



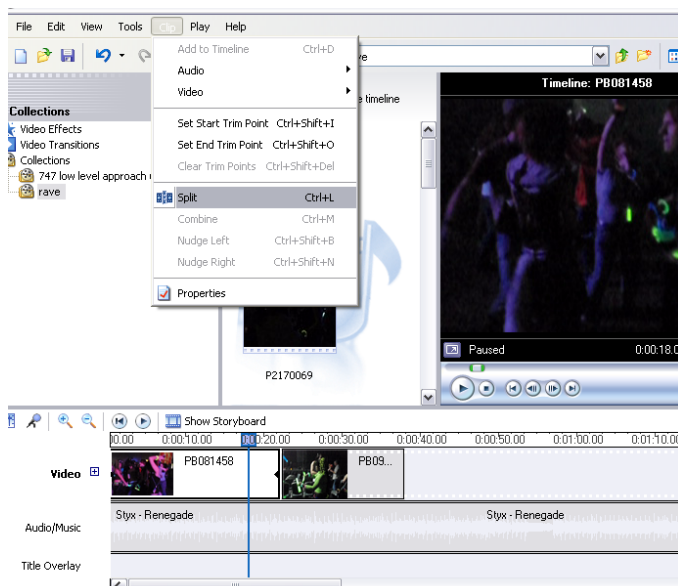
Timeline Layout



- Once you capture the video it will appear in the collections area of the Windows Movie Maker window. To add it to the movie project simply click the clip you want and drag it to the storyboard or timeline, which is located at the bottom of the screen.

Editing the Movie

You can edit your movie in any number of ways, you can take only portions of clips by splitting them, allowing you to add transitions between parts or rearrange scenes. You can adjust the length of clips by trimming the beginning or end, cutting out unwanted sections entirely if you wish.

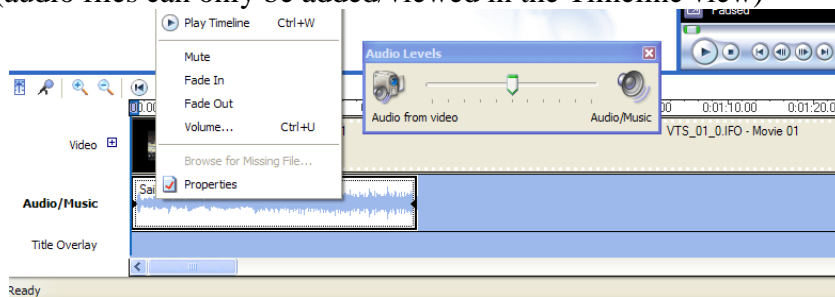


- To split a clip, place the playback marker over the point where you want to split it and click **Split** from the Clip menu at the top of the window.

- This menu is also used to combine two clips that are next to each other, but this

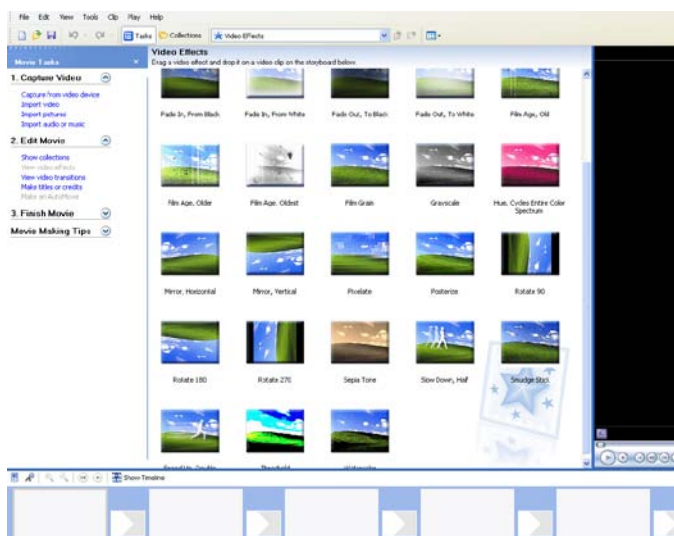
can only be done with clips that are directly beside one another. While holding down the Control key select the two or more contiguous clips you want to combine then click **Combine** under the Clip menu and Movie Maker will merge them into a single clip.

- Trimming a clip allows you to shorten it from the beginning or end, or to cut out an unwanted part in the middle by combining this feature with Split.
- You can trim by either clicking and dragging the actual clip in the Timeline which shortens the length, or place the playback marker over where you wish to trim and in the Clip menu click **Set Trim Start Point**, then move the marker to where you want to trim to and click **Set Trim End Point** from the same menu.
- You can also add audio effects in Windows Movie Maker, you have control over volume, create fade in/out effects or even narrate the movie.
- Add audio to the movie by selecting **Import Audio/Music** from the Capture Video menu under Movie Tasks. Use the browse window to import the audio desired audio clip, it will then be in the Contents pane, to add it to the movie simply drag the clip to the Audio/Music area of the Timeline. (audio files can only be added/viewed in the Timeline view)



Movie Maker allows you to adjust the audio levels of the audio from the imported clips and that of any music or other audio you may add to the project. The **Audio Levels** adjuster is located on the Tools menu; to increase the level of the clip's audio drag the slider towards Audio From Video, to increase the level of an added track move the slider bar towards Audio/Music.

- It is also possible to adjust the length of the audio clip or to trim it using the same methods as adjusting video.
- Windows Movie Maker has many video effects and transitions available to add interest to the movie.
 - **Video Effects** alters the video clips; you can speed up or slow down footage, rotate it, change the color hues, give it the old time movie grain effect and much more.



- You can also transition between scenes using the **Video Transitions**, there are numerous animations for switching between scenes available.
- To add video effects simply click on the one you want and drag it onto the clip you want to apply it to in the Story board. Similarly for the transitions drag the desired transition between the clips on the Storyboard.

For additional information you can consult the Windows Movie Maker comprehensive Guide. You can access this resource under the Movie Making Tips area of the Movie Tasks menu or from the Help menu.